



TWO ADDITIONAL YEAR-ROUND RENTAL HOMES

Islesford, Little Cranberry Island

Expected Move-In Date: Summer, 2025

15 Maple Ave and 11 Cross Rd



Location: A two-bedroom home is located on Maple Avenue, a short drive or walk to the town dock and across from the Islesford Fire House. A new one-bedroom unit is on Cross Road, in the heart of the island, near the Post Office, Town Office, school and Neighborhood House.

Descriptions:

Maple Ave two-bedroom: This updated home has an open concept floor plan that includes a kitchen and living area, two bedrooms, one bathroom and a closed-in side porch. Appliances include washer and dryer, refrigerator, stove, and microwave. Rent: \$1300/month,

Cross Road one-bedroom: A newly-built 864 sq ft compact home. Open concept kitchen/dining/living area, one bedroom and a mudroom/entryway. Appliances include washer, dryer, refrigerator, stove, dishwasher and microwave. Rent: \$1200/month

Security deposit: One month's rent.

The homes are well-insulated with heat pumps, heat pump water heaters, and back-up generators.

Houses are not furnished. Pets may be allowed at the discretion of CIRT.

Tenant Responsibilities: Electricity, internet, snow removal, yard and lawn care, propane for generator, trash removal.

To Apply: Now accepting applications. Go to the CIRT website, <https://www.cranberryislesrealtytrust.org>. Click on the “Instructions On How To Apply” button and then click on “Application” and follow the instructions.

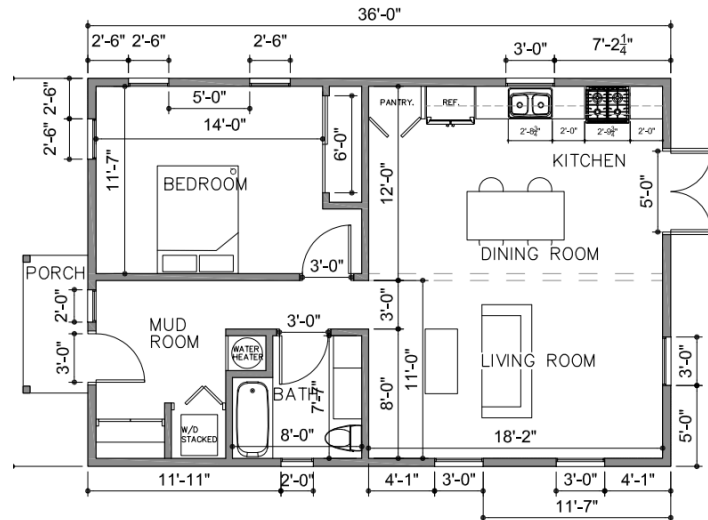
Deadline for applying is March 31, 2025.

Tenant Selection Process: See the [CIRT website](#) for information on our tenant selection process.

Questions: Please contact Malcolm Fernald at malcolmfernalld@gmail.com or by text at 207-266-7496. Malcolm is Chair of CIRT’s Tenant Selection Committee.

Layouts: Please note that CIRT may make modifications to the following exterior and interior layouts.

Cross Road 1-Bedroom Home



Maple Ave. 2-Bedroom Home

